



CLC FB59118 TN



Castaly's CNC lasers
Machine are perfect
for:

- ❖ Cutting a wide variety of material
- ❖ Engraving fine details
- ❖ Video game cabinets
- ❖ Furniture processing
- ❖ Metal processing
- ❖ Plastic processing
- ❖ Wood and plastic engraving



CASTALY INDUSTRIES CORP.

637 VINELAND AVE, LA PUENTE, CA 91746

TEL: 626-968-6330 FAX: 626-968-6333

E-mail: maxcnc@castalymachine.com Website: www.castaly-cncmachine.com

General Information

FOB L.A. California, USA	\$ 245 990.00 USD
Payment Terms	Tooling, rigging, freight & sales taxes are not included
Warranty	50% deposit, 50% balance before ship
Delivery time	One year
General specs	To confirm with sales
	1. Machine Gantry X Axis square rails Parallel vertical accuracy 0.001" (0.03mm)
	2. Y Axis square rails Parallel vertical accuracy 0.001" (0.03mm)
	3. Z Axis ball screw Parallel vertical accuracy 0.001" (0.03mm)
	4. Machine Re-position accuracy 0.001" (0.02mm)
	5. Machine working accuracy 0.004" (0.10mm)
	6. Grating ruler travel accuracy 0.002" (0.05mm)

Features

- ❖ High-end DSP control system with smooth cutting edges and natural curves
- ❖ Imported lenses, strong energy, no need to change frequently, reducing the cost of use
- ❖ LCD touch screen display, showing the processing path, high-end atmosphere grade
- ❖ Full-page cutting, saving costs, suitable for personalization and small batch production
- ❖ Easy to use automatic pallet changer system
- ❖ Easy to learn, one computer operates multiple machines
- ❖ Optional CCD vision positioning and cutting.
- ❖ Machine comes with cutting and engraving software

Technical data

1-	Control system	BCS100 V3.0
2-	Laser power	2 000W
3-	Laser type	Raycus Fiber
4-	Laser classification	Class 4
5-	Working size	1500mm x 3000mm (60'' x 120'')
6-	Automatic pallet change	Included
7-	Cooling type	HANLI Water cooling 6kW
8-	moving speed	0-140 000mm/min (0- 5 500IPM)
9-	Acceleration	1.8G
10-	Minimum cutting width	0.08-0.15 mm
11-	Maximum cutting thickness	25mm (carbon steel), 20mm (SS)
12-	Laser output control	10-100% (software setting)
13-	Minimum shaping character	1.0 mm x 1.0mm
14-	Resetting position accuracy	<±0.01mm
15-	Pressure of N2/O2/AIR	15-20 bar / 6-8 bar / 15-30 bar
16-	Graphic format supported	PLT, AI, BMP, DST, DXF...
17-	Software supported	autoCAD and many others
18-	Total Weight	10 ton (10 000kg)
19-	Layout size	9958mm x 3050mm x 2007mm
20-	Power supply	AC 380V/50Hz-60Hz
21-	Cutting/engraving software	FScut 2000
22-	Dust collection	Option
23-	CCD	Option
24-	Closed cabinet	Included

Feel Free to contact us if you have any technical question or OEM/ODM project, we have solutions for all your needs!

Raycus 6KW laser source



Raycus laser is specifically designed for high performance in harsh cutting environments. The CUT series features a super compact design with the laser housed in an hermetically sealed cabinet. A dehumidifier is installed within the cabinet to ensure optimal internal humidity. Due to continuous design improvements, the industry leading wall-plug efficiency our lasers are known for has reached over 40% in 2015. The electrical cost savings add up to many tens of thousands of dollars over lifetime of a laser. Hot redundancy ensures 100% up time with no change in power, record reliability and maintenance-free operation. The CUT series are available from 1 to 20 kW with a wide variety of fiber delivery options, starting at 50 μm core diameter.



Features

- ▶ Output Power up to 20 kW at Workpiece
- ▶ Wall-plug Efficiency 40%
- ▶ Fiber Delivery 50, 100, 150 or 200 μm
- ▶ Hot Redundancy
- ▶ Maintenance-free Operation
- ▶ Cost-effective Cutting System
- ▶ Record Reliability
- ▶ Compact Rugged Design



Applications

- ▶ 2D/3D Thin & Thick Metal Cutting
- ▶ Cutting Mild and Stainless Steel
- ▶ Optimized for 24/7 Cutting Operations
- ▶ Processing Titanium
- ▶ Processing Highly Reflective Materials: Copper, Brass & Aluminum

Raytools - Autofocus Laser Cutting head

The product has a built-in motor drive unit, which automatically changes the position within a range of 22mm by a linear mechanism. The user can continuously adjust the focus through the program to complete the rapid perforation of the thick plate and automatically cut the plates of different thicknesses and materials.

Features

Modular :

Easy to maintain and reduce downtime.

Multiple protective lenses:

3 protective lenses for efficient protection of collimated focusing lenses.

Durable:

2-way optical water cooling, effectively extending the continuous working time.

Highly dustproof:

IP65 dustproof, patented mirror cover, dustproof and dead angle.

Auto focus:

Automatic focusing, reducing human intervention, focusing speed 10m/min, repeatability 50 μ m.

Specifications

Power level: 2000W

Auto focus:

Range: +10~-12mm

Acceleration: ≤ 10 m/s

Accuracy: $\leq 50\mu$ m

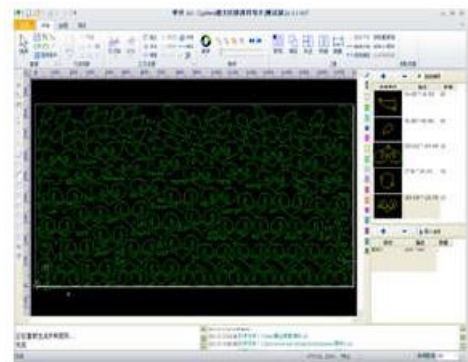


Control Fscut 2000

FScut software is a three-dimensional cutting software, you can directly read UG, SolidWorks software export IGS format files, automatically extract the section to be cut and the track to be cut, without manual editing and selection.

Fast and convenient automatic leveling and center correction function eliminates the cumbersome manual operation, improve the accuracy of cutting: automatically according to the size of the pipe to calculate the pipe rotation and single-sided cutting head when the lifting height, to avoid cutting the process of collision.

But also, greatly reduces the single-sided cutting when the unnecessary lift save time.



HANLI Water Chiller for 2000w laser source

When laser head cut metals, there will produce some hot energy in laser head and laser device. Water chiller is for cooling these two parts. Laser head part, mainly cooling the mirrors. Temperature in the water chiller is auto adjustment, mainly set up with 25 degree around. Water in chiller should be pure water. (one week change one time)
Filter (3 months change one time)

Chiller features

- < cooling capacity for 2000W.
- < $\pm 1^{\circ}\text{C}$ precise temperature control
- < The intelligent temperature controller has 3 control modes, applicable to different applied occasions; with various setting and display functions.
- < Dual temperature to satisfy different needs of fiber laser device and optics.
- < With Ion absorption filtrating and test functions conform to fiber laser device operating requirements.
- < Multiple alarm functions: compressor time-delay protection, compressor overcurrent protection, water flow alarm and over high/low temperature alarm.



Chiller specifications		
1-	Model	HL-6000-QG2/2
2-	Voltage	AC 380V/50-60Hz
3-	Refrigerant	R22
4-	Circulating pump power	1300W
5-	Circulating pump lift	58.6m (2 300’')
6-	Circulating pump flow	66L/min (17,5 Gal/min)
7-	Water tank capacity	140L (37 Gal)
8-	Ambient temperature	0-40 °C (32-104 °F)
9-	Humidity	0-80%
10-	Water temperature control range	10-40 °C (50-104 °F)
11-	Control precision	$\pm 1.5^{\circ}\text{C}$
12-	Size	1000mm x 790mm x 1780mm
13-	Safety protection	Multiple alarm functions: compressor time-delay protection, compressor overcurrent protection, water flow alarm and over high/low temperature alarm;

