



# CASTALY INDUSTRIES CORP.

637 VINELAND AVE. LA PUENTE, CA 91746

TEL: 626-968-6330 FAX: 626-968-6333

Mail: [info@castalymachine.com](mailto:info@castalymachine.com) WebSite: [www.lobomachine.com](http://www.lobomachine.com)

## Manual Adjustment: Main & Scoring Saw Blades Up / Down, Tilting Movement

**TSP-1600MA**  
**5' Sliding Table Panel Saw**  
**\$6,680.00**



<b>TS-P2500MA</b>	<b>8' Sliding Table Panel Saw</b>	<b>\$7,380.00</b>
<b>TS-P3200MA</b>	<b>10' Sliding Table Panel Saw</b>	<b>\$7,780.00</b>
<b>TS-P3800MA</b>	<b>12' Sliding Table Panel Saw</b>	<b>\$9,880.00</b>

### Features:

- Heavy-duty construction, vibration-free operation. Easy to set up and quickly adjusts.
- Saw blade moves up or down and tilting movement manually.
- Scoring unit for clean, accurate chip-free cutting, ready for edge banding.
- Saw shaft bearings lubricated for life, supported with anti-vibration and noise rubbers.
- Special primers and finish for long-term protection.
- High accuracy, free movement sliding table without wear resistance. Specially designed double rollers carriage made by aluminum profile.
- Stable, torsion-free cross slides with easy running swinging arm.

- The table to be assembled integrally to the sliding carriage which works carefully both on movable parts, and sliding system warrants absolute stiffness of the whole carriage.
- The base is welded from cold rolling steel plate offering rugged construction.
- Industrial full power motor for heavy cutting capacity.

SPECIFICATIONS:	TS-P1600 / 2500 / 3200 / 3800MA
Sliding Carriage Dimensions	126" x 14.2"
Cross Cut Capacity	60" / 96" / 120" / 144"
Max. Width Between Saw Blade & Square Fence	49.2"
Saw Blade Inclination (Manual)	0° ~ 45°
Max. Height of Cut	5.3"
Main Saw Maximum Blade Dia.	312 mm (14")
Saw Blade Shaft Dia.	30 mm
Blade Rotation Speed (RPM) 2 SPEEDS	4000 / 6000
Saw Blade Motor Power (HP)	5.3 / 7.5 / 7.5
Scoring Saw Blade Dia.	125 mm (5")
Saw Blade Shaft Dia.	20 mm
Blade Rotation Speed (RPM)	8000
Scoring Motor Power	1 HP
Power	220V 3PH
Machine Size (L x W x H)	65" / 104" / 128" x 133" x 35"
N.W. (LBS)	1105 / 1260 / 1420

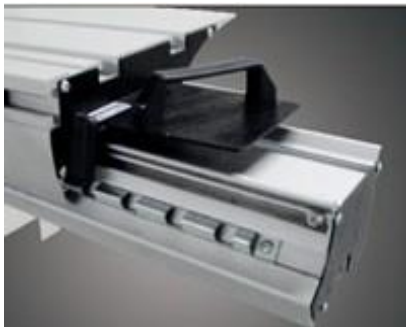


The price is F.O.B. Los Angeles Ca. USA. Tooling, rigging, freight & sales taxes are not included.

Full payment with order or 50% deposit with confirmed order, 50% before shipping.

If there are any questions, please feel free to call us at 1-(626) 968-6330 or email us at [info@castalymachine.com](mailto:info@castalymachine.com)

(Price may vary, please check our website at [www.lobomachine.com](http://www.lobomachine.com) for the current price list)



#### Sliding table :

The sliding table is made out of a heavily ribbed aluminum extrusion which is anodized to ensure a long surface life. The strong structure makes it easy to sustain heavy object.

#### Crosscut fence:

The heavy duty outrigger makes it easy to sustain big panels and the crosscut fence can be positioned at the front or back for easy operation and is excellent in accuracy.



♦ Efficient dust collection system



♦ Quick and secure locking wood pressure



♦ Miter fence with 0° to 45° adjustment for small cutting jobs